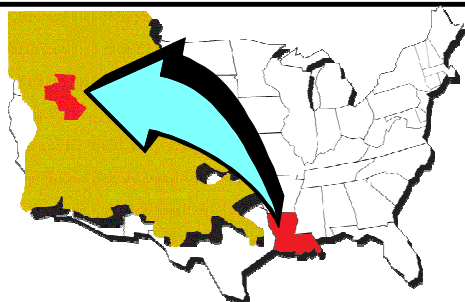
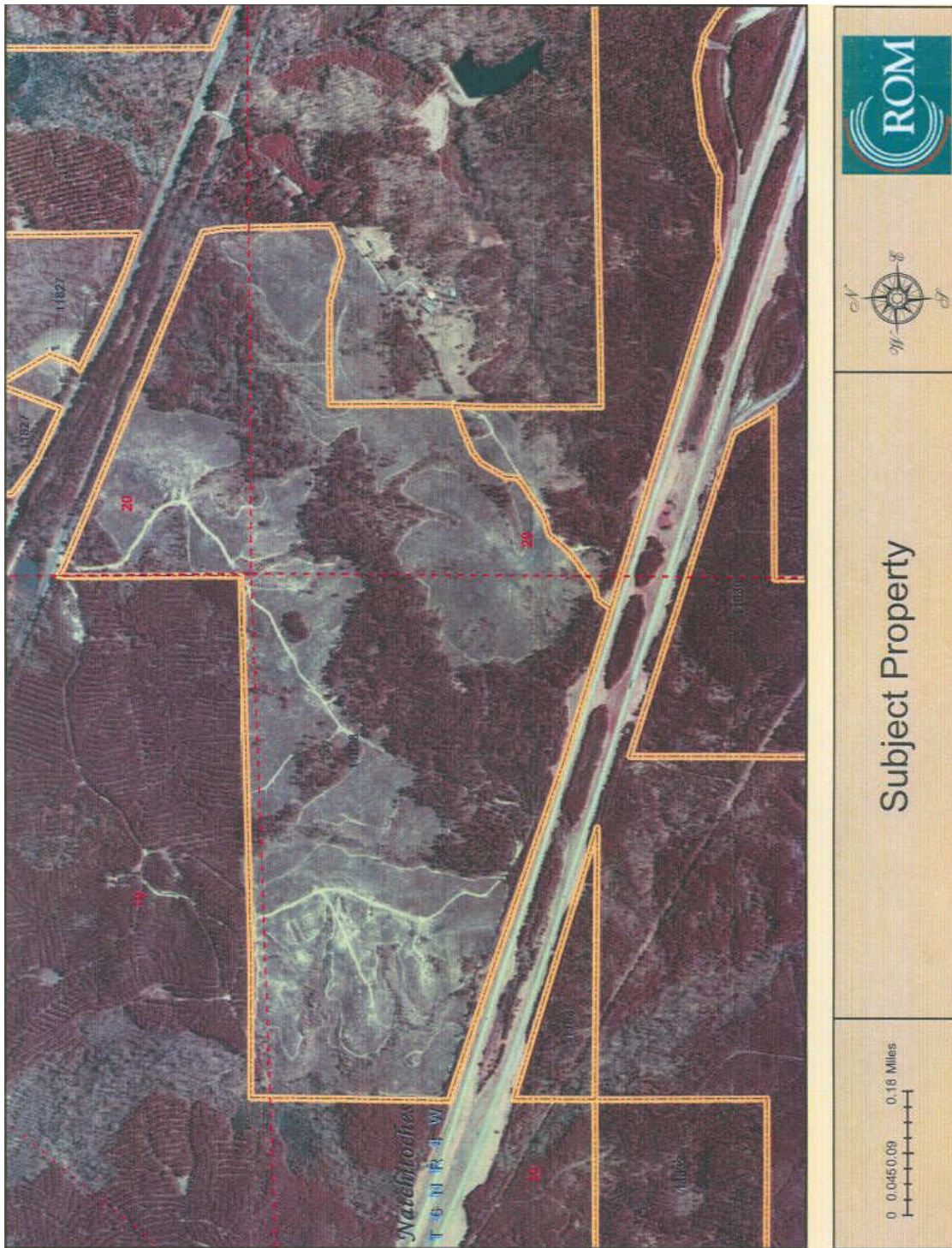


Property: **Martin-Galbraith**
Located: **20 miles SE of Natchitoches**

Acres: **400**
Price: **\$6,000/acre**



* All boundary indications are approximated *

Natchitoches Parish Police Jury

P.O. Box 799
Natchitoches, LA 71458-0799
318-352-2714

econdev@nppj.org receipt@nppj.org
<http://nppj.org/EconomicDevelopment.htm>